

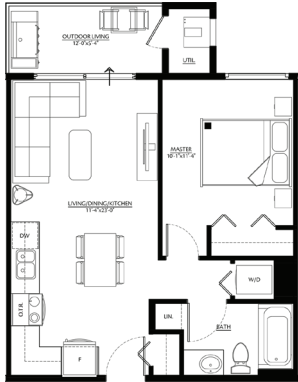
This 53 unit condominium complex offers six unique floor plans from which to choose. Simply find the one that best suits your lifestyle.

Suite A

568 sq. ft.

This beautiful one bedroom unit offers an abundance of natural light throughout. Spacious kitchen with ceramic tile backsplash and quartz counter tops compliment the tasteful finishes. The cozy living room provides access to a nice outdoor balcony and many enjoyable possibilities.

- 9' Ceilings
- One Large Bedroom
- One Bathroom
- Spacious Open Concept
- Outdoor Balcony
- In-suite Laundry
- Kitchen with quartz counter tops
- Triple Pane Windows
- Linen Closet
- Central Air/Heating with in-suite Temperature Control
- One Underground Parking Spot - Assigned

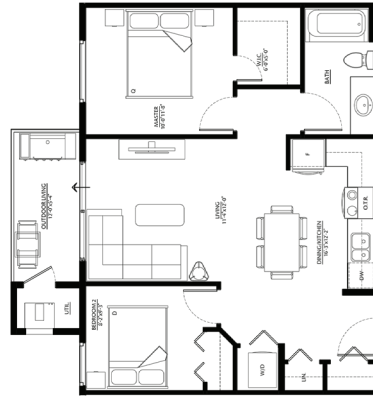


Suite B

772 sq. ft.

Stunning 2 bedroom unit with great open plan, master with walk-in closet, quartz counter tops, stainless steel appliances and a great balcony makes this space feel like home.

- 9' Ceilings
- Two Bedrooms
- One Bathroom
- Walk-In Closet
- Spacious Open Concept
- Outdoor Balcony
- In-suite Laundry
- Kitchen with quartz counter tops
- Triple Pane Windows
- Linen Closet
- Central Air/Heating with in-suite Temperature Control
- One Underground Parking Spot - Assigned
- One Surface Parking Spot- Assigned



Suite C

925 sq. ft.

A unique design! Stunning two bedroom and two bathroom with great open concept. Huge master suite. The large dual entry balcony provides access to the living room and the master bedroom.

- 9' Ceilings
- Two Bedrooms
- Two Full Bathrooms
- Spacious Open Concept
- Huge Dual-Entry Balcony
- In-suite Laundry
- Kitchen with quartz counter tops
- Triple Pane Windows
- Central Air/Heating with in-suite Temperature Control
- One Underground Parking Spot - Assigned
- One Surface Parking Spot - Assigned

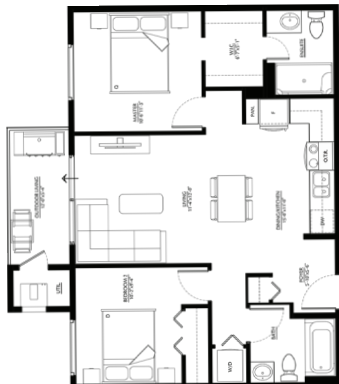


Suite D

831 sq. ft.

This gorgeous unit boasts 2 bedrooms and 2 full bathrooms, an exceptional open concept provides you with endless possibilities, quartz counter tops, stainless steel appliances, a master ensuite with large walk-in closet plus a nice balcony compliments this unit.

- 9' Ceilings
- Two Bedrooms
- Two Full Bathrooms
- Spacious Open Concept
- Large Balcony
- Entry Foyer
- Walk-In Closet
- In-suite Laundry
- Kitchen with quartz counter tops
- Triple Pane Windows
- Central Air/Heating with in-suite Temperature Control
- One Underground Parking Spot - Assigned
- One Surface Parking Spot- Assigned

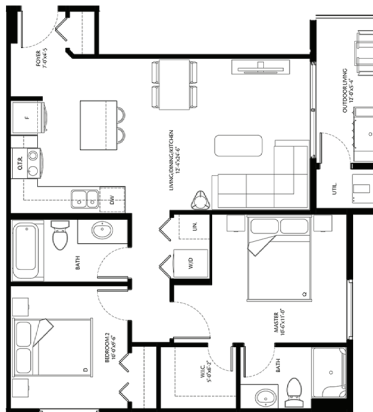


Suite E

857 sq. ft.

This large open concept features 2 bedroom and 2 full bathrooms, quartz counter tops, stainless steel appliances, a master ensuite with large walk-in closet, a unique bedroom layout and extra living space sets this unit apart.

- 9' Ceilings
- Two Bedrooms
- Two Full Bathrooms
- Kitchen Island Included
- Walk-In Closet
- Huge Open Concept
- Large Balcony
- Entry Foyer
- Linen Closet
- In-suite Laundry
- Kitchen with quartz counter tops
- Triple Pane Windows
- Central Air/Heating with in-suite Temperature Control
- One Underground Parking Spot - Assigned
- One Surface Parking Spot - Assigned

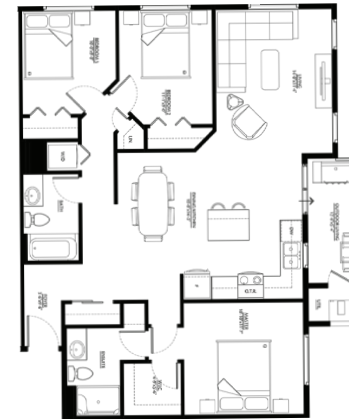


Suite F

1170 sq. ft.

This three bedroom, two full bathroom plan offers a generous master suite complete with walk-in closet and ensuite. The massive open concept offers plenty of space for daily activities while the large triple pane windows provide tons of natural light. A convenient in-suite laundry and a gorgeous balcony are the perfect finishing touches.

- 9' Ceilings
- Three Bedrooms
- Two Full Bathrooms
- Formal Dining Space
- Kitchen Island Included
- Walk-In Closet
- Large Balcony
- Massive Open Concept
- Front Entry Foyer
- Linen Closet
- In-suite Laundry
- Kitchen with quartz counter tops
- Triple Pane Windows
- Central Air/Heating with in-suite Temperature Control
- One Underground Parking Spot - Assigned
- One Surface Parking Spot- Assigned



Roberto Fridson

204.297.8859 rf.fridson@gmail.com

housesinwinnipeg.com consodinwinnipeg.com pointenorthstation.com

